

# Capture Every Detail — Imaging Solutions for Mixed and Large Animal Care



Designed specifically for mixed and large animal care, our advanced veterinary imaging solution delivers the power, flexibility, and precision needed for larger patients. With a robust, durable design and high-quality imaging capabilities, this system ensures clear, detailed diagnostics whether you're working in a clinic, barn, or out in the field. Built to handle the demands of larger animals, it offers a seamless workflow, superior image clarity, and the confidence veterinarians need to deliver the best possible care in every environment.

The most lightweight, portable, all-in-one DR-MA solution available.



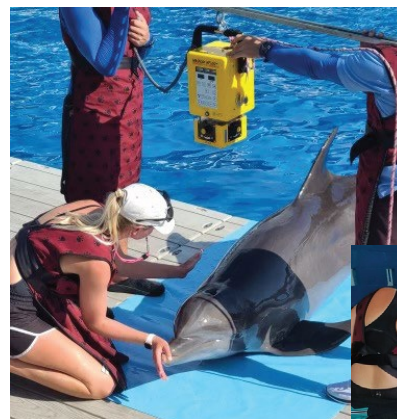
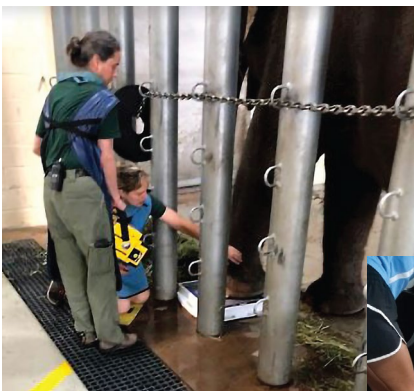
## Momentum-MA

This lightweight system weighs under 28 pounds and features a rugged, durable aluminum design with a scratch-resistant finish. It includes an all-in-one charging setup, allowing both the panel and tablet to charge with a single power cable. Custom ergonomic holders make it easy to handle for users of all sizes, while the built-in positioner and custom tablet enclosure provide added convenience for streamlined veterinary imaging.

- **Ultra-Lightweight:** Weighs under 28 pounds for maximum portability.
- **Exclusive Custom Design:** Custom holders, built-in positioner, and tablet enclosure available only with MO-MA.
- **All-in-One Charging System:** Charge both panel and tablet with a single power cable for ultimate convenience.
- **Ergonomic Handling:** Custom panel and tablet holders accommodate all hand sizes for easy, comfortable use.
- **Durable Construction:** Built with rugged, lightweight aluminum and a scratch-resistant finish for long-lasting performance.

## Versatility

Built for the demands of mixed-animal veterinary care, this portable, rugged system empowers you to deliver high-quality imaging wherever your patients need you. From clinics to farms to remote locations, setup is fast and effortless—letting you spend less time on equipment and more time on care. Designed to handle animals of all sizes, it offers consistent, reliable imaging under real-world conditions. Durable, versatile, and ready to move when you are, this system is the ultimate solution for busy veterinary professionals who need performance without compromise.





## Optional Generators

For enhanced versatility, the Momentum-MA kit can be paired with either of two lightweight, battery-powered portable generators—the VET-20BT or SPX-018—each offering advanced features for remote use without compromising image quality.

VET-20BT



SPX-018



VET-20BT

- Output: 1.6 kW (20 mA / 90 kV)
- Weight: 16 lbs
- Wireless charging for minimal downtime

SPX-018

- Output: 1.8 kW (40 mA / 90 kV)
- Weight: 16 lbs
- 5-inch touchscreen with preset APRs for simplified workflow

## Mixed Animal Veterinary Software



Our Ultra Acquisition Software provides veterinarians with a streamlined, user-friendly digital imaging solution, combining clinical review, automated image processing, and storage in one intuitive platform.

- Complete DR console managing hardware, positioning, and image processing
- Automated image optimization to improve diagnostic confidence
- Customizable technique settings tailored for animals of various sizes
- Integrated positioning guide for accurate veterinary imaging
- Reject analysis reporting for continuous quality improvement
- Intuitive workflow for efficient training and daily use

## 14x17 Premium Glassless DR Panel

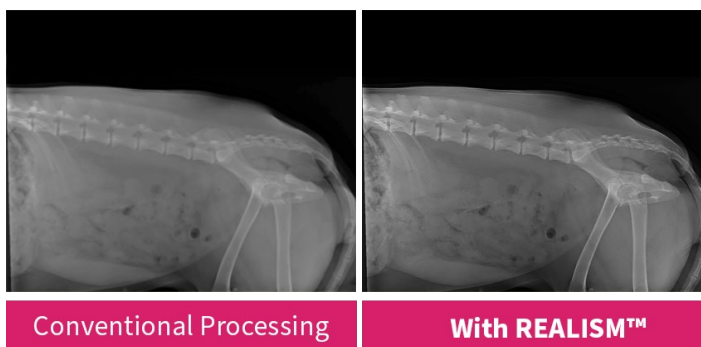


This 14x17" glassless panel is built for portability, durability, and exceptional image quality. It features a capacitor with a 7-year warranty, rapid charging, and an IP56 dust and liquid resistance rating. Weighing just 3.9 lbs with an easy-grip design, it's ideal for field and clinic use.

- 14x17" Imaging: Full-size panel ideal for mixed and large animal work.
- Lithium-Ion Capacitor: Rapid charging with a 7-year warranty.
- IP56 Protection: Dust and liquid resistant for rugged field use.
- Cesium Scintillator, 100 Micron | 5 lp/mm.
- Featherlight 3.9 lbs: Ultra-lightweight glassless with easy-grip design.
- Rapid Charge: Fully charges in just 13 minutes.

## REALISM

The MOMENTUM-DR wireless flat panel detector's advanced sensitivity lowers the required X-ray exposure, enhancing safety without compromising image quality. REALISM™ technology sharpens high-frequency microstructures—such as bone tubercular—ensuring unparalleled clarity. Combined with the panel's high resolution, even the finest details are brought to life for more confident diagnoses.



20/20 Imaging is a leading provider of **digital imaging solutions** tailored to veterinary care.

With a full-service approach—from advanced hardware to innovative software—20/20 Imaging streamlines workflows and enhances diagnostics. As part of Konica Minolta, trusted widely by hospitals, we leverage the same proven software, bringing exceptional value to your practice.

Learn more about 20/20 Imaging's **digital x-ray solutions** at [2020imaging.net](https://2020imaging.net), or scan the QR code.



Learn more about the Momentum-MA at  
[2020imaging.net/mixed-animal](https://2020imaging.net/mixed-animal)

© 2025 Konica Minolta Healthcare Americas, Inc. M2368 0525 RevA

**20/20 Imaging, a division of Konica Minolta Healthcare Americas, Inc.**  
829 S Virginia Rd - Suite A  
Crystal Lake, IL 60014  
Tel: +1 (866) 734-6234  
[info@2020imaging.net](mailto:info@2020imaging.net)

[2020imaging.net](https://2020imaging.net)