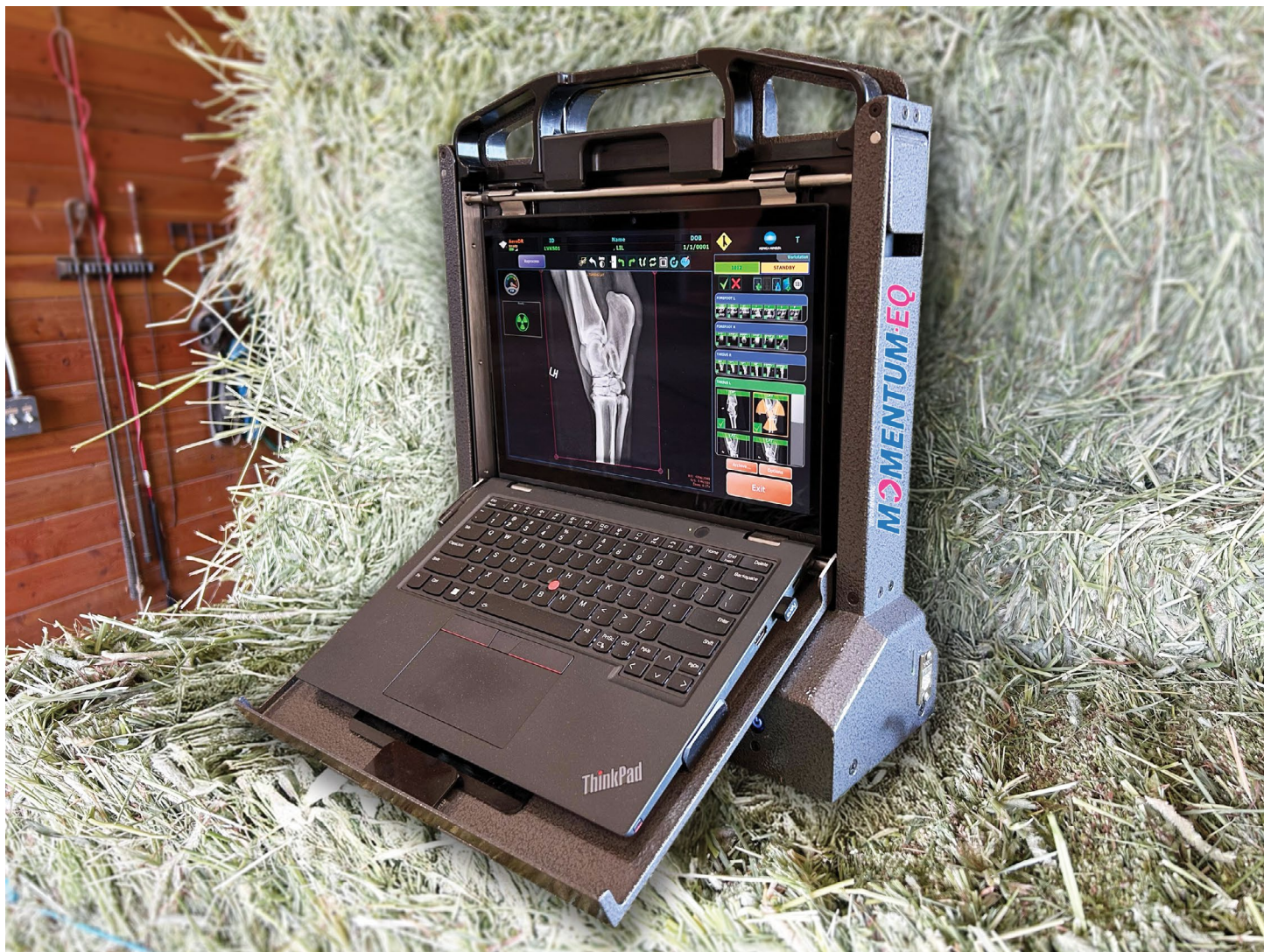


Streamline Equine Diagnostics with Advanced DR Imaging for Superior Care.



Discover the next level of equine healthcare with our all-in-one Digital Radiography solution, designed to deliver fast, high-resolution imaging in even the most demanding field conditions. Experience the confidence that comes from dependable, advanced imaging technology tailored specifically for equine veterinarians.

The most lightweight, portable, all-in-one DR-EQ solution available.



Momentum-EQ

At under 18 pounds, the MO-EQ is a lightweight system featuring a rugged aluminum build and scratch-resistant finish. Designed for durability and ease of use, it's ideal for demanding equine environments.

- Weight: Under 18 lbs
- Lightweight aluminum design, scratch-resistant finish
- Built-in positioner and custom holders (exclusive to MO-EQ)
- Custom tablet enclosure
- All-in-one charging system (single power cable setup)
- Ergonomic panel and tablet holders suitable for all hand sizes

Versatility

Designed to tackle the unique challenges of equine medicine, this system's portable and robust design makes it easy to transport and operate in field settings. Whether you're scanning in a clinic or at a remote stable, you'll benefit from quick setup and minimal downtime, ensuring you can focus on the horse rather than the hardware. With a versatile form factor tailored to the fast-paced nature of equine care, it delivers consistent, reliable imaging and stands up to the demands of on-site use—all while supporting an efficient workflow for busy veterinary professionals.



Optional Generators

For enhanced versatility, the Momentum-EQ kit can be paired with either of two lightweight, battery-powered portable generators—the VET-20BT or SPX-018—each offering advanced features for remote use without compromising image quality.

VET-20BT



SPX-018



VET-20BT

- Output: 1.6 kW (20 mA / 90 kV)
- Weight: 16 lbs
- Wireless charging for minimal downtime

SPX-018

- Output: 1.8 kW (40 mA / 90 kV)
- Weight: 16 lbs
- 5-inch touchscreen with preset APRs for simplified workflow

Equine Optimized Software



Our Ultra Acquisition Software provides veterinarians with a streamlined, user-friendly digital imaging solution, combining clinical review, automated image processing, and storage in one intuitive platform.

- Complete DR console managing hardware, positioning, and image processing
- Automated image optimization to improve diagnostic confidence
- Customizable technique settings tailored for animals of various sizes
- Integrated positioning guide for accurate veterinary imaging
- Reject analysis reporting for continuous quality improvement
- Intuitive workflow for efficient training and daily use

10x12 Premium DR Panel

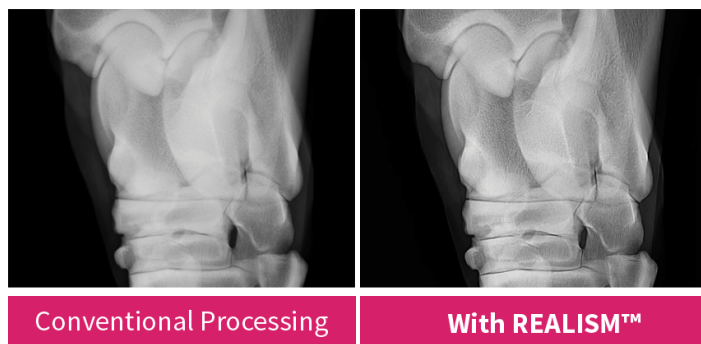


At just four pounds, this lightweight, cassette-sized DR panel is ideal for veterinary use, combining superior portability and diagnostic performance for animal care.

- Compact, lightweight (4 lbs) design perfect for mobile veterinary practices
- 10" x 12" imaging area suitable for small and mid-sized animals
- Cesium (CsI) scintillator delivers exceptional veterinary imaging clarity
- Capture over 150 images (4 hours) per charge with Rapid Charge capability
- Durable lithium-ion capacitor rated for 7 years
- 3-year warranty ensures long-term reliability in demanding veterinary environments

REALISM

The MOMENTUM-DR wireless flat panel detector's advanced sensitivity lowers the required X-ray exposure, enhancing safety without compromising image quality. REALISM™ technology sharpens high-frequency microstructures—such as bone trabeculae—ensuring unparalleled clarity. Combined with the panel's high resolution, even the finest details are brought to life for more confident diagnoses.



20/20 Imaging is a leading provider of **digital imaging solutions** tailored to veterinary care.

With a full-service approach—from advanced hardware to innovative software—20/20 Imaging streamlines workflows and enhances diagnostics. As part of Konica Minolta, trusted widely by hospitals, we leverage the same proven software, bringing exceptional value to your practice.

Learn more about 20/20 Imaging's **digital x-ray solutions** at 2020imaging.net, or scan the QR code.



Learn more about the Momentum-EQ at
2020imaging.net/equine

© 2025 Konica Minolta Healthcare Americas, Inc. M2364 0425 RevB

20/20 Imaging, a division of Konica Minolta Healthcare Americas, Inc.
829 S Virginia Rd - Suite A
Crystal Lake, IL 60014
Tel: +1 (866) 734-6234
info@2020imaging.net

2020imaging.net